

# TheMagicTouch®

Direct To Film (DTF) Transfer Printing

# DTF MAGIC®



Suitable for Cotton,  
Polyester, Performance  
Fabrics & lots more

Outstanding Durability  
& Stretch Properties

Eco Passport.  
OEKO-TEX  
Certified inks

Produce up to 300  
A3 transfers per day

No Pre-Treatment

Water Based Inks

Vivid Colours

55cm Print Width

Mutoh Brand  
Made in Japan



## Direct-to-Film (DTF) Transfer Printing

Welcome to Direct-to-Film (DTF) digital transfer printing technology. This exciting new innovation is the process garment decorators have been waiting for, water-based inks for light and dark garments with no pre-treatment, cutting or weeding required. Suitable for polyester, cotton, mixed and performance fabrics, pique, canvas, denim, leather and lots more. The transfer prints offer outstanding wash durability and stretch properties.

DTF technology "Bridges the Gap" between DTG, screen printing and traditional transfer printing methods, each of which have their own limitations.

DTF helps to create and implement pro-active sales and marketing opportunities as never seen before. Users can meet market demands of quality, quick turnaround, low cost per transfer and reduce labour costs.

DTF transfers are perfect for workwear, sportswear, fashion and promotional garments and products over many markets.



## Mutoh/STS VJ-628D Printer

The Mutoh/STS printer is made in Japan and features a proven industrial DX7 Epson print head. The desktop model offers a 60cm PET film roll fed device driven by our DTFMagic RIP powered by Digital Factory from Cadlink. The Eco passport and OEKO-TEX certified inks are manufactured in the USA by STS who have been leaders in ink technology for over 20 years.

Using the bulk ink adaptors the 8 slot ink configuration of C, M, Y, K, LC, LM, W and W offers image quality and soft feel beyond expectations.

The printed transfers are manually powdered and cured using a unique drawer tray oven method for perfect workflow and transfer production. The preparation of designs and artwork for DTF transfers is much the same using traditional software packages such as Corel Draw, Photoshop, Illustrator or anything that enables EPS or vector based files to be created however most bitmap formats are also suitable.

The DTFMagic RIP ensures accurate and consistent colour management. Features include automatic image nesting, transfer cost, variable data, spot colour matching, rasterization, hot folders, multiple queue options, colour swap, background removal, automatic black knockout and auto sheet cut.

The printer also features proven air-tight sealed ink pouches to ensure no contamination to ensure minimal maintenance or print-head issues. Automatic cleansing and maintenance cycles are controlled by the dedicated software. Manual cleansing is featured during installation and on-site training.



Performance Fabrics



Bags & Holdalls



Hoodies



Caps & Hats



Pique & Wicked Fabrics



Cotton & Polyester

## Durability & Cost per Transfer

DTF transfers offer vibrant colours, outstanding durability and have amazing stretch properties.

The production process is simple, images and designs are printed in mirror image face down with C, M, Y, K, LC, LM, W and W water-based pigmented inks onto coated PET film and then "topped" with the white ink which remains tacky until the adhesive powder is applied and cured.

Produce up to 300 A3 transfers per day.

The finished transfers are ready to apply or can be stored for up to a year before use. The finished transfer surpasses any digital screen print process in terms of feel, durability and cost.

Whilst we attempt to give guidance on cost per transfer it's always been dependent on the image size, number of colours and what image is to be printed. However, the installed DTFMagic RIP enables every job to be accurately costed prior to printing, whether it be one or multiple images. A good example is a 60mm full colour round logo would cost less than 5p each!



Manual Curing Oven

## Service and support

TheMagicTouch, with over 30 years experience and extensive knowledge of the digital transfer market, offer the ultimate support and training in all aspects of the technology. Every printer is installed on-site with full training conducted by our experienced technical team. Pre-installation training is also available at the Dunstable showroom to assist the operators to fully understand the complete printing procedure.

All maintenance guidance is covered in detail during the training to ensure full confidence with all users. The company also offer online support using the built-in TeamViewer remote link to enable any questions or issues to be resolved quickly and professionally.

A 12 month on-site warranty is included on all DTF equipment including parts, labour and travel with extended warranty options beyond the first year available upon request. The print heads are excluded from the warranty cover.

The range of garment fabrics possible to decorate with DTF transfers is considerable. Fabrics such as polyester, pique fabrics, mixed blends and performance garments have always been a challenge and now they are not! DTF transfers are also compatible with selected packaging, paper bags, presentation boxes, floor mats and lots more.

## Meet the DTF Technical team



David - Nathan - Paul - Owen



T-Shirts

Trainers

Gift Boxes & Bags

Floor Mats

Umbrellas

Cushions

# The Mutoh/STS DTF Transfer Solution

## Mutoh/STS VJ-628D Printer

Epson Print Head (180 x 8 rows), Pre & Post heating system, Media Auto Cut, 47 x 17 x 14" 32kgs, One year limited warranty, Made in Japan.



## DTFMagic RIP

Digital Factory by CADlink – The ultimate RIP for all DTF colour management. Features include automatic image nesting, transfer cost, variable data, spot colour matching, rasterization, hot folders, multiple queue options, colour swap, background removal, automatic black knockout and auto sheet cut. Both printer and RIP are Windows 11 compatible.



## STS Inks

8 x Bulk Ink Adaptors, C, M, Y, K, LC, LM, W and W DTF Inks (all inks 1 litre, white 900ml). High colour density, wide colour gamut, outstanding colour saturation, Non-toxic and environmentally friendly. Print head safe encapsulated resin + Nano pigment. The DTF inks are water-based pigmented inks which are perfect for the application of the adhesive powders and offer better adhesion and durability.



## PET Film

Cold Peel, 60cm x 100m - This single-sided coated matte film provides perfect printer roller traction with minimal static allowing for a great printed image without any background.



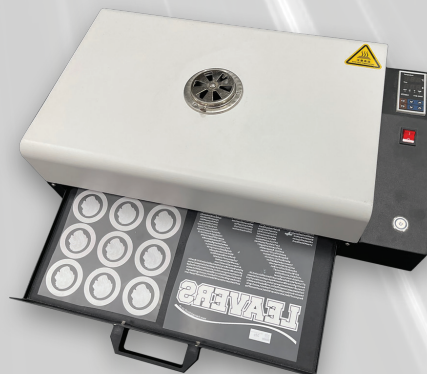
## TPU Powder & Cleaning Solution

Polyurethane hot-melt adhesive powder has excellent bonding and flexibility properties, 70-80 um (particle size). Transfer time is 15 seconds at 150°C for traditional 100% cotton with temperatures as low as 120°C possible with other heat susceptible fabrics and textiles. Sold in 2kg bottles. Manual powder tray included. Full range of cleaning and maintenance products supplied.



## Curing Oven

The Curing Oven has a digital controller for precise settings of temperature and time. The curing process starts at the touch of a button and alerts to remove the transfer film.



TheMagicTouch (GB) Ltd

Unit 4, Apex Business Centre, Boscombe Road, Dunstable, Bedfordshire, LU5 4SB, England

www.themagictouch.co.uk 01582 671444 sales@themagictouch.co.uk